

# Portrait of a Graduate

## Mellen School District

**Cultivates  
Personal  
Growth and  
Knowledge**



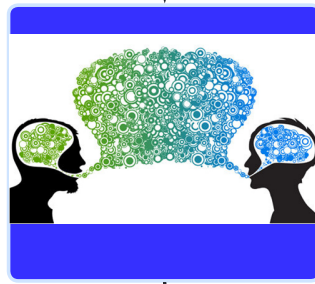
- Shows Confidence
- Applies Learning
- Sets Personally Meaningful Goals
- Engages in Self-reflection

**Solves  
Problems**



- Thinks Critically
- Demonstrates Resiliency
- Embraces Creativity
- Weighs Evidence to Make Decisions

**Communicates  
Effectively**



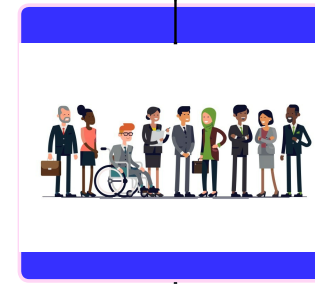
- Collaborates
- Navigates Conflict
- Utilizes Multiple Forms of Communication
- Engages in Civil Discourse

**Sustains  
Wellness**



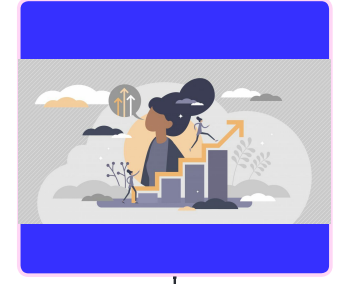
- Cultivates Physical and Emotional Well-being
- Fosters Empathy
- Builds Relationships

**Embraces  
Differences &  
Diversity**



- Participates in Community
- Promotes Global Responsibility
- Shows Cultural Competence

**Masters Life  
Skills/Self  
Advocacy**



- Takes Initiative
- Understands Financial and Digital Literacy
- Accesses Resources